

CERTIFICATE OF LOCATION OF GOVERNMENT CORNER

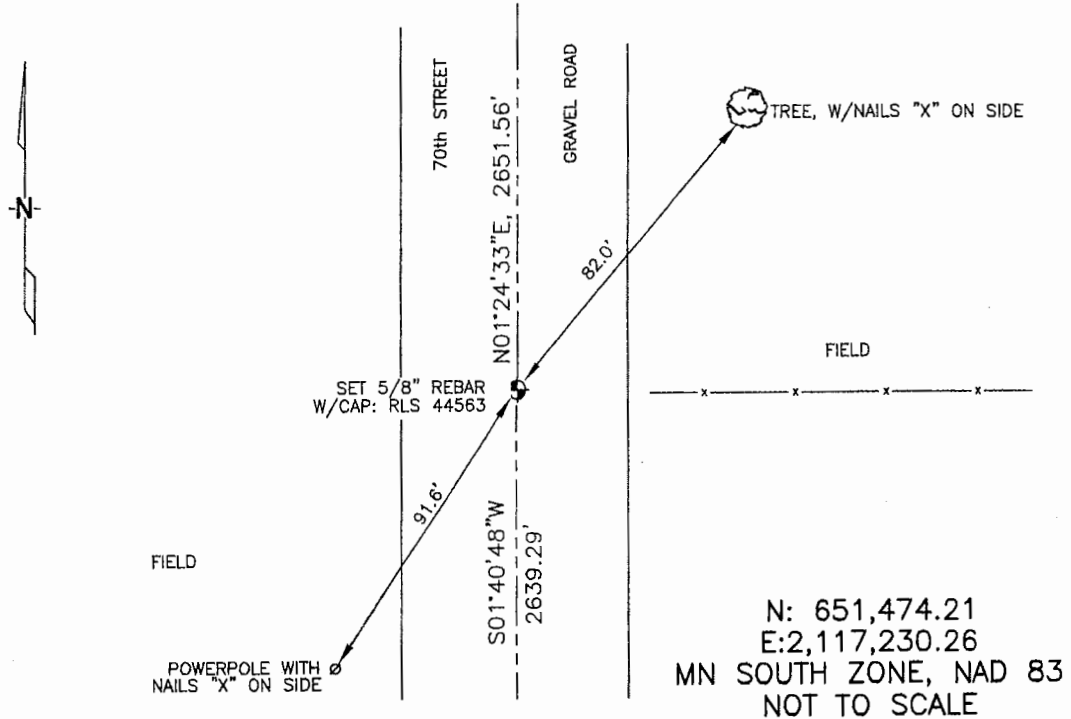
WEST 1/4 Corner of Section 29, Township 105, Range 42, 5TH P.M.

STATE OF MINNESOTA, County of MURRAY

At the corner location shown on the sketch :

- On _____ found _____
- left monument as found, lowered monument, removed monument (explain)
- On 3/13/2006 set 5/8" REBAR WITH CAP: RLS 44563, OPPOSITE FENCE LINE RUNNING EAST.

Sketch of reference ties



Statement of evidence relative to this corner location is on back page

I hereby certify that this document and the data contained herein was prepared by me or under my direct supervision.

Thomas V. Zeff 5/5/06
 Thomas Zeff Date
 Registration No. 44563

- Land Surveyor, Professional Engineer
 County Surveyor, County Engineer

OFFICE OF THE COUNTY RECORDER

County of _____
SEP 28 2006

I hereby certify that this document was filed in the Co. Recorders office at _____ .M. on the _____ day of _____ A.D. , 20

County Recorder James V. Johnson
 By _____, Deputy

DOCUMENT NO. _____

STATEMENT OF EVIDENCE:

WEST 1/4 CORNER, SECTION 29, T. 105 N., R. 42 W.,
MURRAY COUNTY, MINNESOTA

- 1861 D.W. Wellman & S.S. Smoot, US. Deputy Surveyors,
monumented corner.
- 3/13/2006 Ulteig Engineers, Inc., Survey Crew, Brian Payne Party Chief,
found nothing. Set a 5/8" rebar with cap: RLS 44563,
opposite fence line running east.
Ties: NE-82.0' to nailed "X" on deciduous tree;
SW-91.6' to nailed "X" on power pole;
N-2651.56' to NW corner, Section 29;
S-2639.29' to SW corner, Section 29.